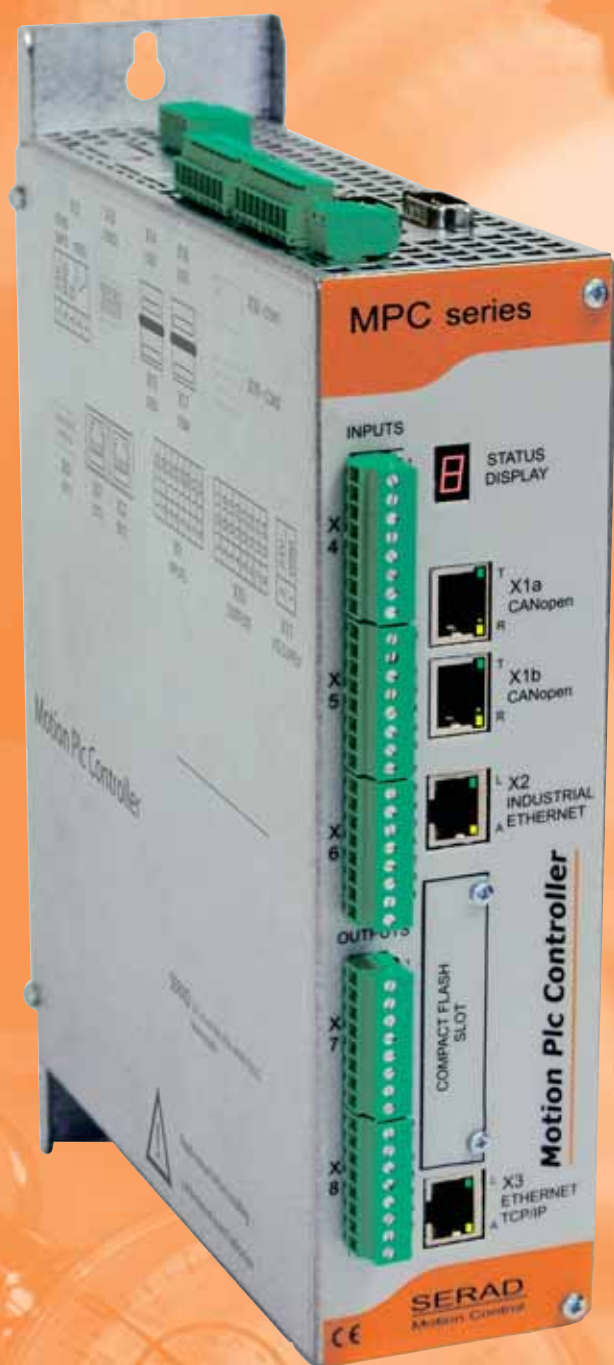


## **Motion Plc Controller** **MPC Series**

*Industrial PC for Automation*



Motion

Automation

Industrial  
PC

PLC  
IEC 61131-3



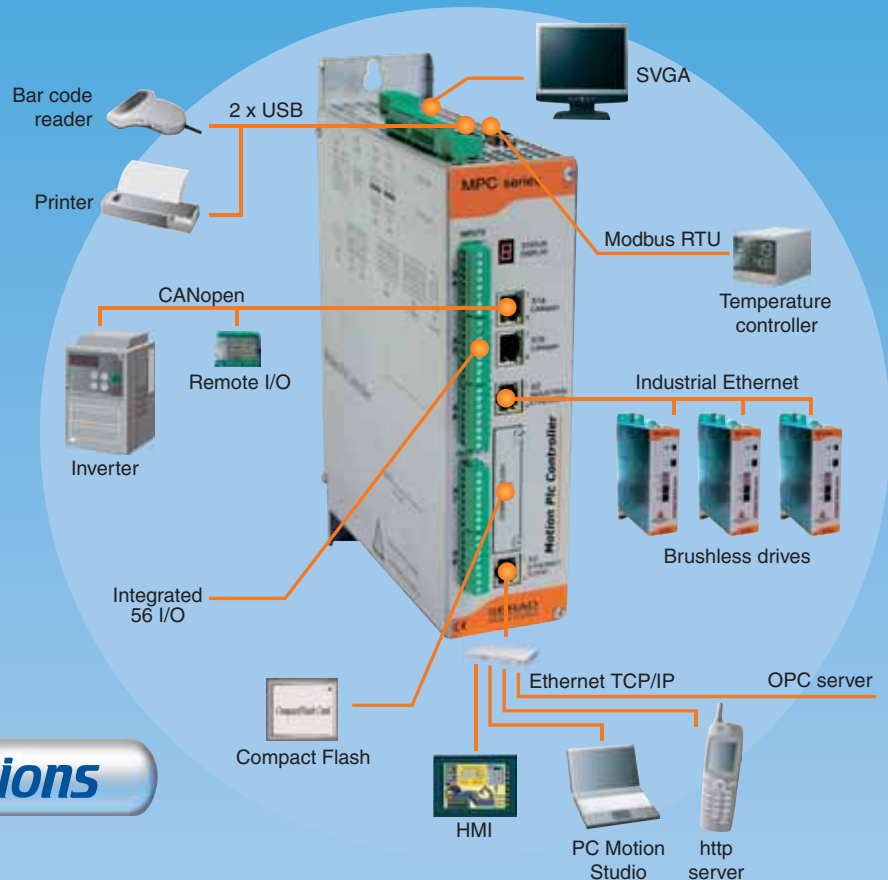
*The solution for your motion control applications*

# MPC *PC power, PLC reliability*

Providing both high performance and outstanding flexibility, the **MPC** is the answer to a broad range of industrial applications.

The power of the **MPC** processor enables it to manage complex machines with a high update rate.

**MPC** takes advantage of all the PC communication interfaces and, in addition, provides an industrial Ethernet and a CANopen fieldbus port.



## Advanced Motion Functions



- Fast and accurate positioning



- Electric gearbox with adjustable ratio



- CAM Profiles with dynamic phase adjustment



- Registration with 10 µs capture window



- CAM boxes



- Synchronization



- Virtual axes



- Linear, circular and helical interpolation

## IEC 61131-3 PLC



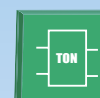
Supports the 6 languages of the IEC 61131-3 standard



• LD



• SFC



• FBD



• ST



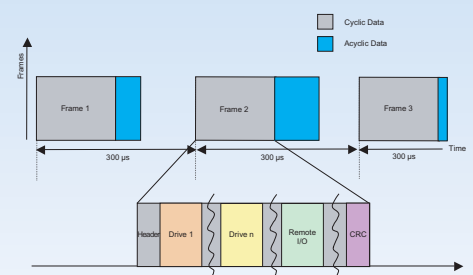
• IL



• CFC

## Industrial Ethernet

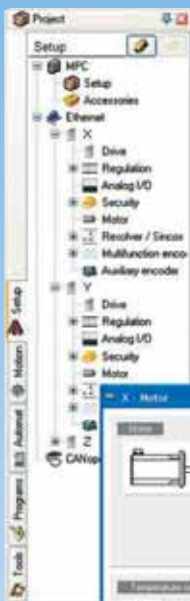
- 100 Mbit/s bus
- Real time and deterministic Ethernet
- Transfer of cyclic and acyclic data
- Jitter lower than 1 µs



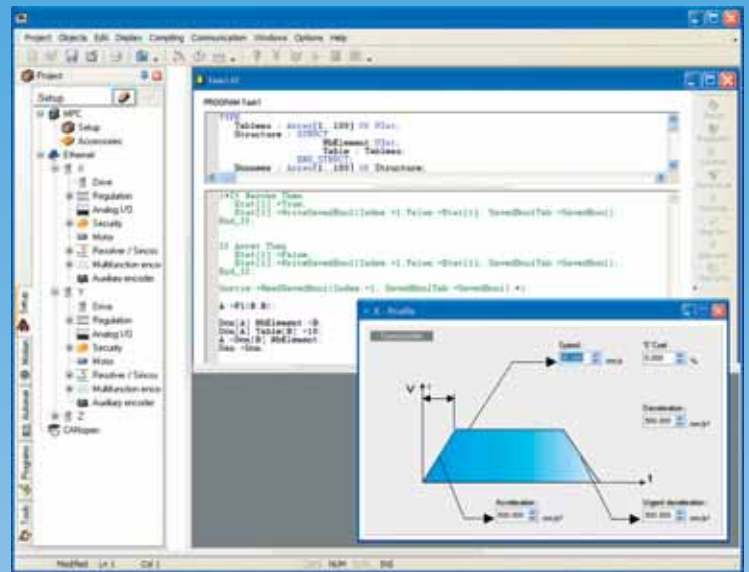
# Motion Studio *Software workshop*

Thanks to its intuitive interface and its standardized language IEC 61131-3, the software workshop *Motion Studio* is extremely user-friendly and permits a rapid development of your application.

## User-friendly



- Project management
- Simplified configuration using a tree structure
- Multi-window
- Graphic editors
- Floating menus
- Intuitive navigation
- Toolboxes
- Integrated help files



## Fast development

- Editors with syntax description
- Creation of function blocks
- Choice program type and priority
- Cross references
- Definition of CAM profiles by graphic tool
- Easy declaration of axes, I/O and variables
- Alarm display
- Numerous integrated libraries



## Setup tools

- Instrument display
- Trace mode and single step
- Breakpoints
- Axis auto-tuning
- Trajectory generators
- Motion simulator
- Hyper Terminal
- Variables watch list
- Animation tables
- Digital oscilloscope
- Network analyser





## Advantages

- Axis controller, PLC and PC in the same box
- Open and evolutionary architecture
- Standardized Programming IEC 61131-3
- Easy to use
- Simplified wiring using digital data bus

## Application Areas

- Label printing
- Packaging machines
- Textiles machines
- Press feeding
- Water jet cutters
- Pick and place robots
- Woodworking machines
- Flow regulation
- Dosing, etc.

## Technical Features

<b>Power supply</b>	24 V DC $\pm 20\%$ , 1.5A typical Galvanic isolation Tolerates momentary supply loss
<b>Architecture</b>	Intel Celeron® processor® 400 MHz Real time multi-tasking core Compact Flash memory 64 MB, Ram 64 MB RAM saved data memory 128 KB
<b>Local inputs / outputs</b>	MPCIO module* 32 inputs / 24 outputs - 24 V DC PNP inputs - 24 V DC PNP static outputs, 500 mA per output - LED state visualization
<b>Communication</b>	1 x ETHERNET TCP/IP 100 Mbit/s 1 x INDUSTRIAL ETHERNET 100 Mbit/s 2 x USB 1 x CANopen 1Mbit/s 1 x RS232, 1 x RS232 / RS485
<b>WatchDog</b>	Relay : N/O contact
<b>Diagnostic</b>	STATUS display
<b>Advanced Motion Functions</b>	Fast and accurate positioning Electronic gearbox with adjustable ratio CAM Profiles with dynamic phase adjustment Compensation and superposition movement functions Linear, circular and helical interpolation Registration CAM boxes
<b>Dimensions w x h x d</b>	66 x 283 x 198
<b>Operating temperature</b>	5 to 45 °C

\* option